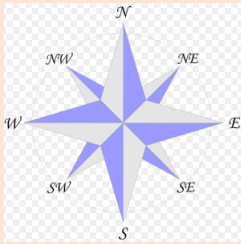


## Direction

You need to know the 8 point compass for giving directions, saying which way long shore drift is going or if it says look at the headland in the northwest corner of the map.

### The compass

On most maps the direction 'north' will be straight up the map but check the compass carefully.



## Map Symbols

Generally if you are given an OS map it will have a key telling you what the symbols mean. However, it's a good idea to learn some of the most common ones which are shown below.

Motorway	County boundary	Footpaths
Main (A) road	National Park boundaries	Viewpoint
Secondary (B) road	Building	Tourist information centre
Bridge	Bus station	Parking
Railway	Places of worship	

## Scale and Distance

Maps should always have a scale which can be shown with a ratio e.g 1:50,000 (which means 1 cm on the map equals 50,000cm (or 0.5km) in real life) or a scale line which you can put your ruler alongside to see what distance is represented by 1cm on the map.

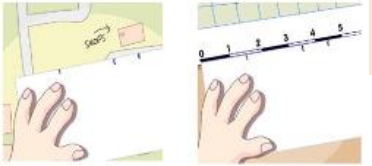
**On the paper's edge**  
One method of measuring distance is to take a sheet of paper and place the corner of a straight edge on your starting point. Now pivot the paper until the edge follows the route that you want to take.

**Step 1**  
Every time the route disappears or moves away from the straight edge of your paper, make a small mark on the edge and pivot the paper so the edge is back on course.



**Step 2**  
Repeat this process until you reach your destination.

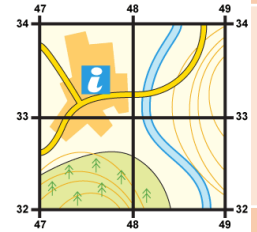
**Step 3**  
You should be left with a series of marks along the edge of your paper. You can now place the sheet against the scale bar on your map. The last mark you made will tell you the real distance you need to travel.



## 4 Figure Grid References

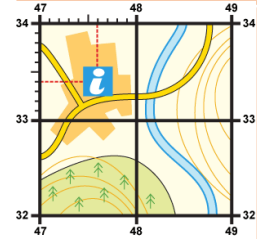
Ordnance Survey maps have numbered gridlines drawn on them. The lines running up and down the page are called eastings (because their numbers get higher as you move eastwards) and the ones running across the map are known as northings (because their numbers get higher as you move northwards).

### Four-figure grid references



To give the 4 figure grid reference for the information centre give the number of the line that runs up the left hand side of the square (47).  
Then give the number of the line that runs across the bottom of the square (33).  
This gives a four figure grid reference of 4733.

### Six-figure grid references



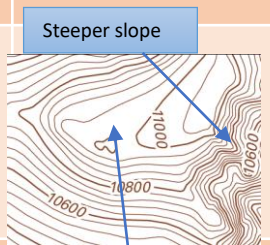
To give a 6 figure grid reference for the information centre start by finding the line that runs up the left hand side of the square (47) then imagine that the square is divided into tenths (this has been done for you on the diagram) and count across the tenths (6). Then give the line that runs across the bottom of the square (33) and count up the tenths (4).  
Put it altogether to give a grid reference of 476334.

# Year 7 Map and Atlas skills

## Relief

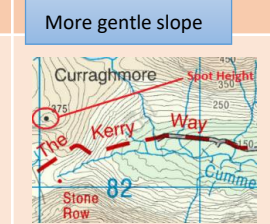
### Contours

Contours are orange lines found on an OS map that join places of equal height above sea level. They show the height of the land in metres by the numbers marked on them. They also show the steepness of the land by how close they are together (the closer the lines the steeper the slope).



### Spot Heights

Spot heights are black dots with a number next to them that give the height of that particular spot.



## Inferring things from maps

As a geographer you should be able to describe and interpret a map.

### Describing locations

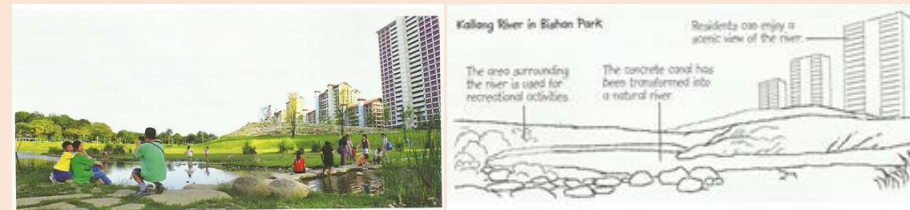
When you are asked to describe the location of something then write about what it is near. Use the scale calculate exactly how far away it is and also use compass points to describe the direction.

### Inferring things from map evidence

You also need to be able to work something out using map evidence. For example you might be asked what evidence there is that tourism is important along a particular section of the coast, so you might look for a sandy beach, a cliff top path and blue symbols which show tourist facilities e.g. a tourist information centre or a campsite.

### Drawing a field sketch

A field sketch is used to show the main geographical characteristics of a landscape. It should be an accurate outline sketch and include labels and annotations.



## Latitude and Longitude

Latitude lines on an atlas map run horizontally around the earth and tell us how far north or south of the Equator (0°). So for example London is 51°N. Longitude lines run vertically around the earth and they measure how far east or west of the Prime Meridian (a line of longitude that runs through Greenwich in London). So for example London would be 0° W.

