



Task 1, Topic 1: Marvellous Memory...

Mini Experiment:

In this experiment you can test as many or as little people as you like. As the experimenter you should read out one line at a time of the triangle of numbers below to your participant. When you have finished reading out the line, your participant should recite back to you as many of the numbers they can remember. Record how many numbers they recall correctly on each line.


6
27 35
10 28 22
38 46 10 11
52 8 19 81 17
55 38 29 13 8 71
75 17 20 61 82 5 12
61 38 17 40 49 84 57 8
71 22 31 89 47 5 1 16 94
18 95 48 30 89 67 18 11 15 17
76 83 40 28 25 12 15 53 95 49 20
16 9 11 17 49 50 28 69 24 53 78 10
77 53 49 76 19 94 87 64 23 19 15 51 2
78 56 34 19 27 20 80 42 38 64 29 10 79 31

Now think about and explain:

- 1) What was the maximum amount of numbers your participants call recall from any line? (If you used more than one participant, take the average).
- 2) What do your results suggest about memory?

Now research and answer the following...

- 1) What is memory? Does it have different types? If so, explain them...
- 2) What is the capacity and duration of the average memory in humans?
- 3) What did George Miller do in 1956? What did he discover about memory? How does this link to the results from your experiment above?



Task 2, Topic 2: Attachment



Babies, Babies, Babies...



Research and answer the following:

From a Psychological Perspective...

Why do babies cry all of the time?

Why are all babies born with blue eyes?

Useful Link: http://www.babycenter.com/2_creating-an-attachment-with-your-baby_10350318.bc

“Oh, oobee doo I wanna be like you...”



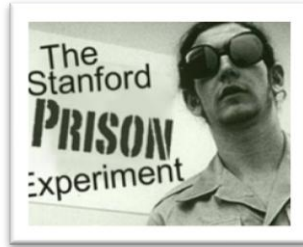
Consider, research and answer the following:

From a Psychological point of view, why should Mowgli not survive in the Jungle?

Hint: Try to link to the psychologist John Bowlby in your answer...

Task 3, Topic 3: Social Influence

Obedience, Obey, Conform...



Research and produce a fact sheet on two key studies:

- 1) Milgram's (1963) Obedience to Authority
- 2) Zimbardo's Stanford Prison Experiment

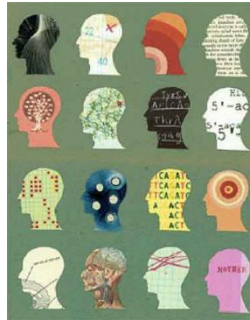
Taking it further...



Explain how research such as Milgram & Zimbardo, might explain historical atrocities such as the Nazi persecution of the Jews...

Task 4, Topic 4: Psychopathology...

What is normal?



Consider, research and explain...

- 1) Is there such a thing as normal and abnormal? What are the definitions of these?
- 2) How do Psychologists decide what is abnormal?

Fear. Sadness. Obsession.



Produce a fact file on each of the following mental disorders. Include **symptoms**, potential **causes** and **treatments**.

- 1) Phobias
- 2) Depression
- 3) OCD

Task 5, Topic 5: Approaches to Psych...

The Famous Five

There are five main Psychological approaches or perspectives. Research them and explain the key terms, assumptions and psychologists which fit into each one.

